


Cummeennabuddoge Wind Farm





Figure 14-1a
Overview of Cultural Heritage Sites within Study Area
Overview

- Key**
- Site boundary
 - Study Area (5km)
 - County Boundary
 - Proposed Turbine Location
- Cultural Heritage Sites (Baseline value)**
- Very High
 - High
 - Medium/High
 - Medium/Low
 - Low
- Archaeological Area 13**
- Cultural Heritage Sites (first edition)
 - 50m buffer from Cultural Heritage Sites (first edition)
- Townland boundary (within development)**
- 50m buffer from Townland boundary (within development)





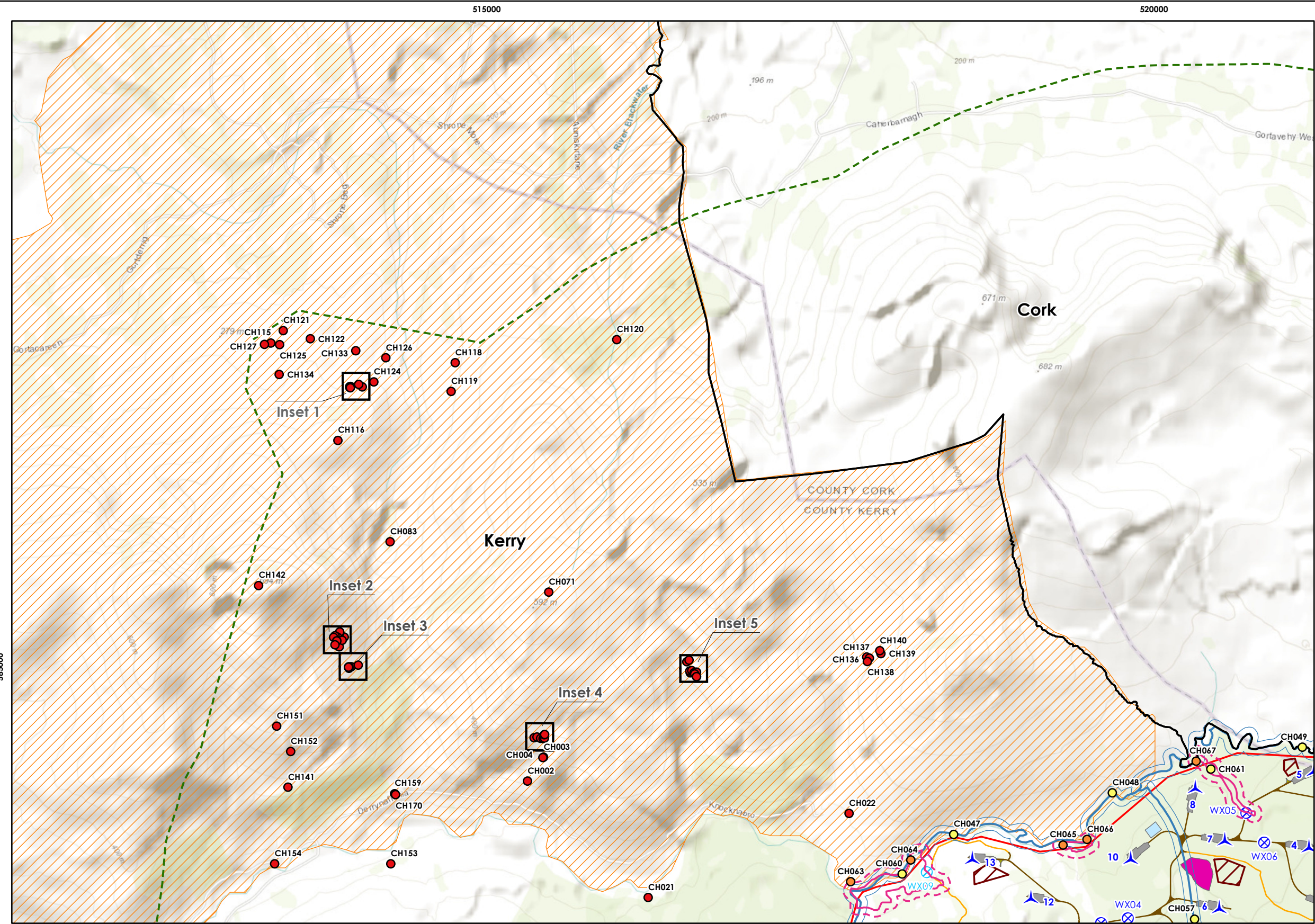
Scale @ A3:
1:55,000



0 0.5 1 2

Kilometres

Portions of this document include intellectual property of Esri and its licensors and are used herein under license. Copyright © 2023 Esri and its licensors. All rights reserved.

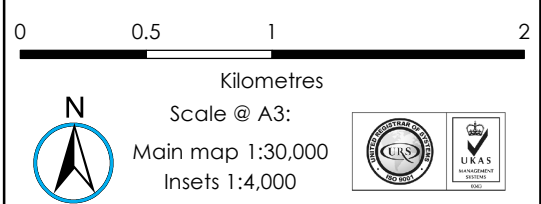


Cummeennabuddoge Wind Farm

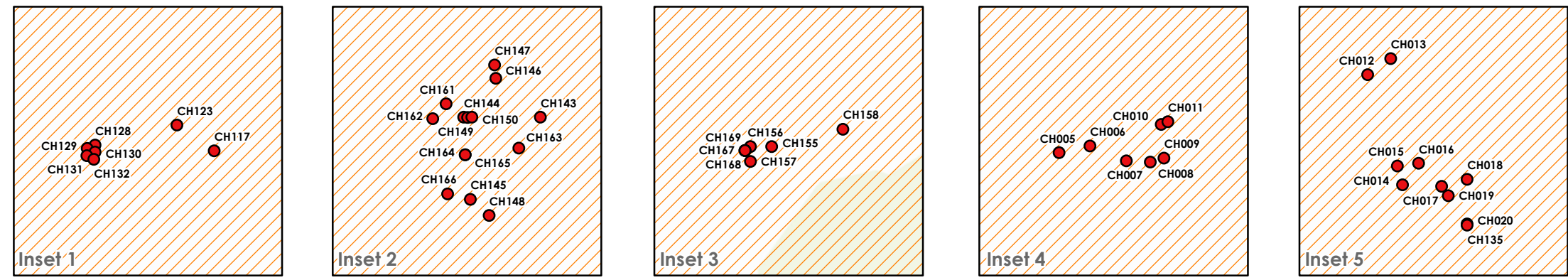


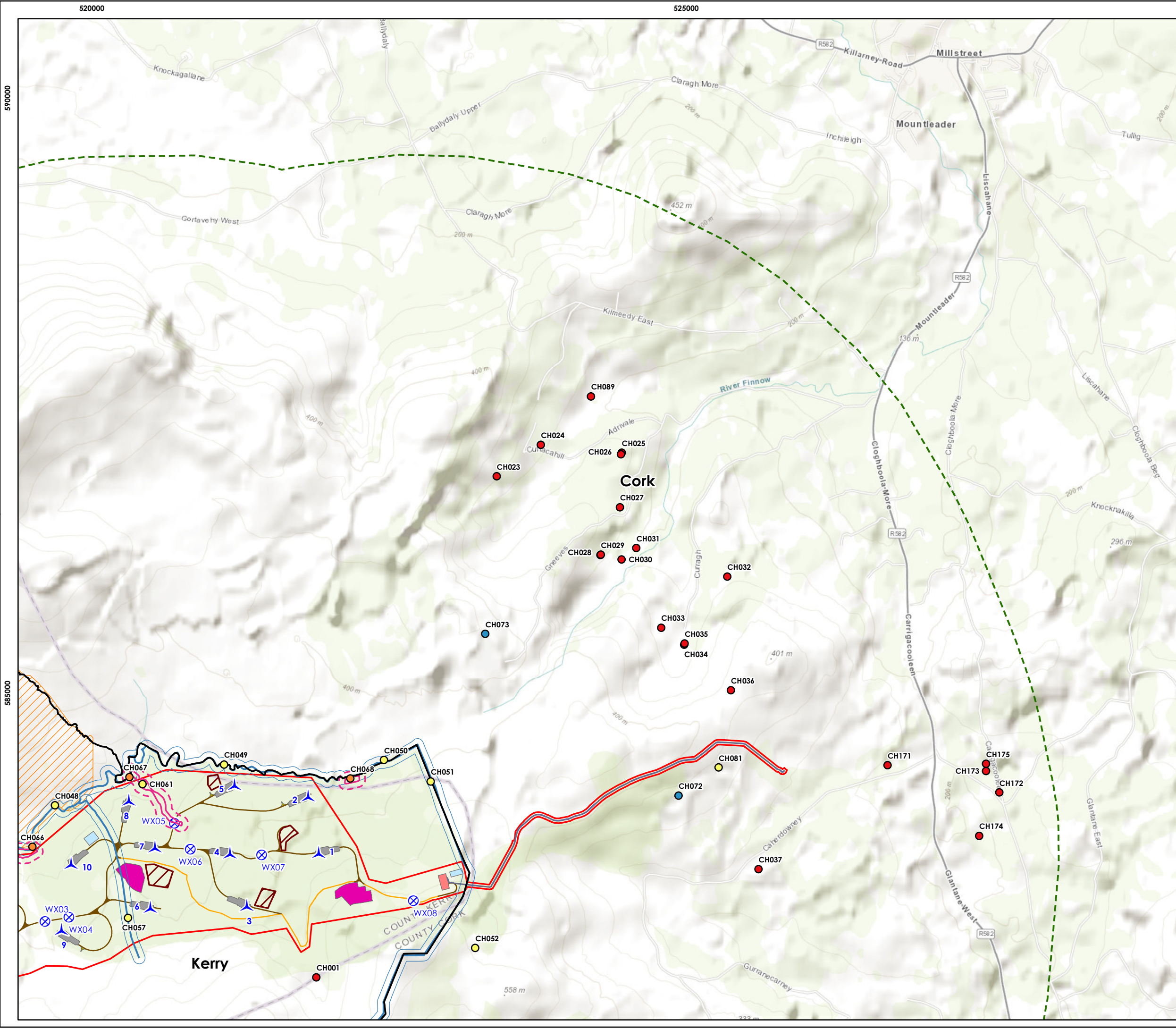
Figure 14-1b
Overview of Cultural Heritage Sites within Study Area
North Western Extent

- Key**
- Site boundary
 - Study Area (5km)
 - County Boundary
 - Proposed Turbine Location
 - New watercourse crossing
 - Existing watercourse crossing
 - Foundations and hardstandings
 - Compound
 - Borrow pit
 - Peat repository
 - New onsite access track - Founded
 - Upgraded onsite access track
 - New turning head
- Cultural Heritage Sites (Baseline value)**
- Very High
 - High
 - Medium/High
 - Medium/Low
 - Low
- Archaeological Area 13**
- Cultural Heritage Sites (first edition)
 - 50m buffer from Cultural Heritage Sites (first edition)
 - Townland boundary (within development)
 - 50m buffer from Townland boundary (within development)



Portions of this document include intellectual property of Esri and its licensors and are used herein under license. Copyright © 2023 Esri and its licensors. All rights reserved.





Cummeennabuddoge Wind Farm



Figure 14-1c
Overview of Cultural Heritage Sites within Study Area
North Eastern Extent

Key

- Site boundary
- Study Area (5km)
- County Boundary
- Proposed Turbine Location
- New watercourse crossing
- Foundations and hardstandings
- Substation
- Compound
- Borrow pit
- Peat repository
- Cable trench
- New onsite access track - Founded
- Upgraded onsite access track
- New turning head

Cultural Heritage Sites (Baseline value)

- Very High
- High
- Medium/High
- Medium/Low
- Low
- Archaeological Area 13
- Cultural Heritage Sites (first edition)
- 50m buffer from Cultural Heritage Sites (first edition)
- Townland boundary (within development)
- 50m buffer from Townland boundary (within development)

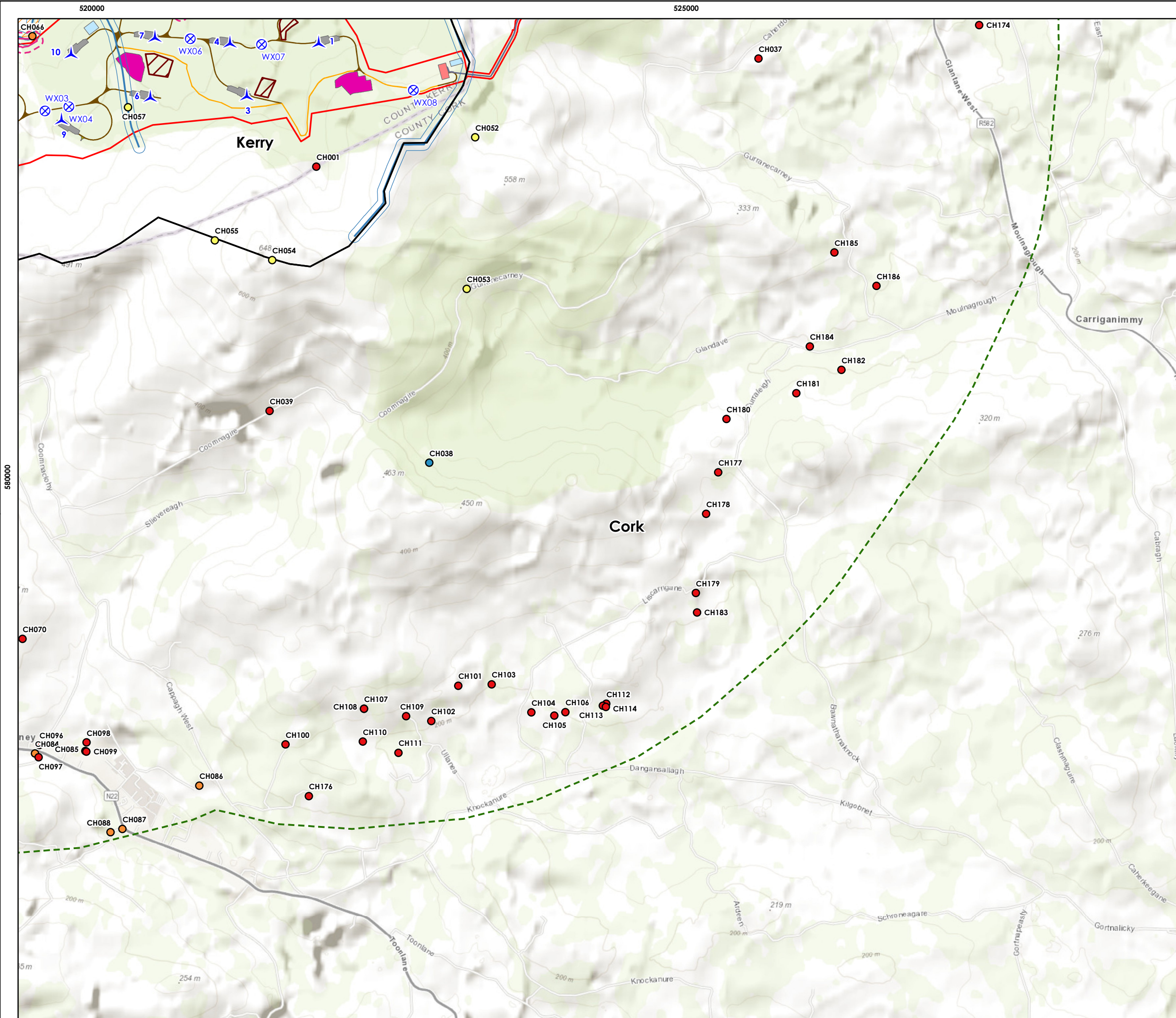


0 0.5 1 2
Kilometres

N

Scale @ A3:
1:30,000

Portions of this document include intellectual property of Esri and its licensors and are used herein under license. Copyright © 2023 Esri and its licensors. All rights reserved.



Cummeennabuddoge Wind Farm



Figure 14-1d
Overview of Cultural Heritage
Sites within Study Area
South Eastern Extent

- Key**
- Site boundary
 - Study Area (5km)
 - County Boundary
 - Proposed Turbine Location
 - New watercourse crossing
 - Foundations and hardstandings
 - Substation
 - Compound
 - Borrow pit
 - Peat repository
 - Cable trench
 - New onsite access track - Founded
 - Upgraded onsite access track
 - New turning head
- Cultural Heritage Sites (Baseline value)**
- Very High
 - High
 - Medium/High
 - Medium/Low
 - Low
 - Archaeological Area 13
 - Cultural Heritage Sites (first edition)
 - 50m buffer from Cultural Heritage Sites (first edition)
 - Townland boundary (within development)
 - 50m buffer from Townland boundary (within development)



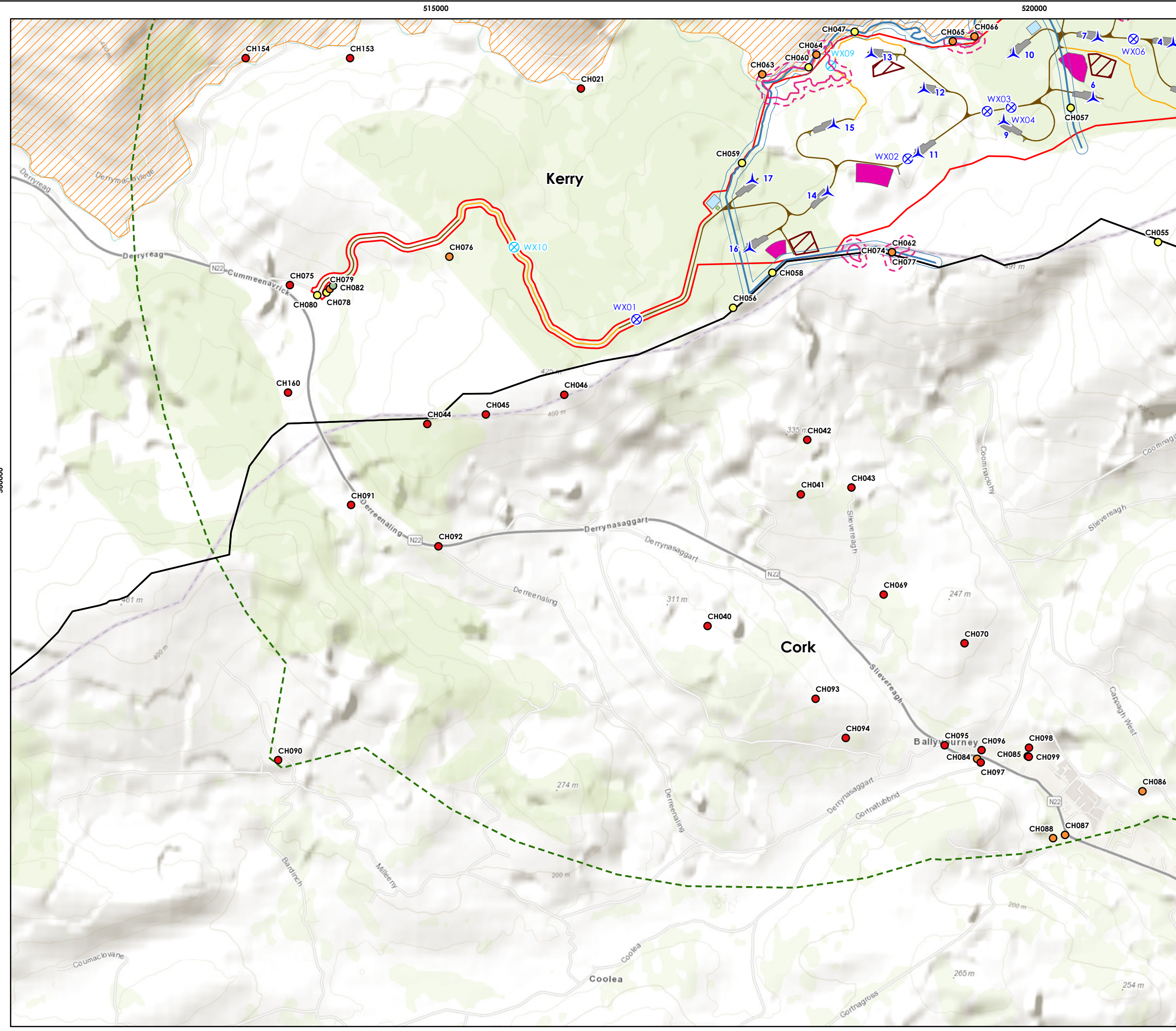
0 0.5 1 2
Kilometres

N

Scale @ A3:
1:30,000

UKAS
UNAS

Portions of this document include intellectual property of Esri and its licensors and are used herein under license. Copyright © 2023 Esri and its licensors. All rights reserved.



Cummeennabuddoge Wind Farm



Figure 14-1e
Overview of Cultural Heritage Sites within Study Area
South Western Extent

Key

- Site boundary
- Study Area (5km)
- County Boundary
- Proposed Turbine Location
- New watercourse crossing
- Existing watercourse crossing
- Foundations and hardstandings
- Compound
- Met mast hardstanding
- Borrow pit
- Peat repository
- New onsite access track - Founded
- Upgraded onsite access track
- New turning head

Cultural Heritage Sites (Baseline value)

- Very High
- High
- Medium/High
- Medium/Low
- Low
- Archaeological Area 13
- Cultural Heritage Sites (first edition)
- 50m buffer from Cultural Heritage Sites (first edition)
- Townland boundary (within development)
- 50m buffer from Townland boundary (within development)



0 0.5 1 2
Kilometres

N

Scale @ A3:
1:30,000

Portions of this document include intellectual property of Esri and its licensors and are used herein under license. Copyright © 2023 Esri and its licensors. All rights reserved.